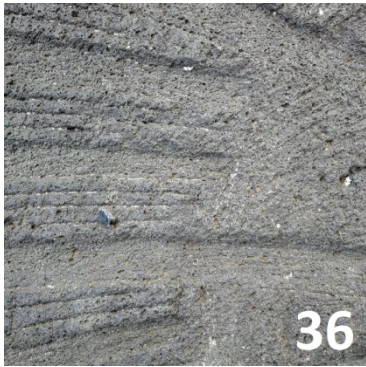


Haus Kemnade Letterbox



A		E	
B		F	
C		G	
D		H	
		I	
X		Y	

QS 14 QS 10

$X = A + B + C + D$
 $Y = E + F + G + H + I$

Peilung von Standort B:
 X Meter in Y Grad

GPS-Koordinaten:
 Nord $51^\circ 24.328 + X$
 Ost $7^\circ 14.743 + Y$

